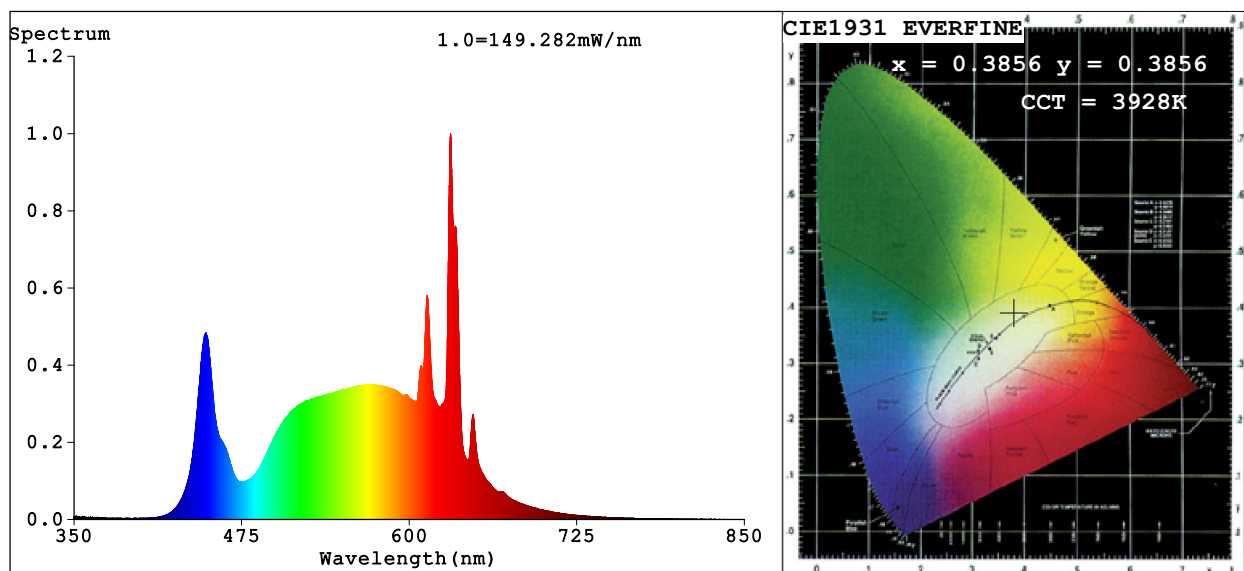


Spectrum Test Report



Color Parameters:

Chromaticity Coordinate: $x=0.3856$ $y=0.3856$ $u'=0.2250$ $v'=0.5062$
 CCT=3928K (Duv=0.0026) Dominant WL:Ld =578.1nm Purity=31.5%
 Ratio:R=20.0% G=76.6% B=3.4%; Peak WL:Lp=630.9nm FWHM=8.3nm
 Render Index:Ra=91.4 CRI=87.5 TM30:Rf=90 Rg=102
 R1 =93 R2 =92 R3 =90 R4 =93 R5 =91 R6 =89 R7 =94
 R8 =89 R9 =66 R10=80 R11=93 R12=69 R13=92 R14=94 R15=90

Photo Parameters:

Flux = 3498 lm Eff. : 115.29 lm/W Fe = 10.39 W

Electrical parameters:

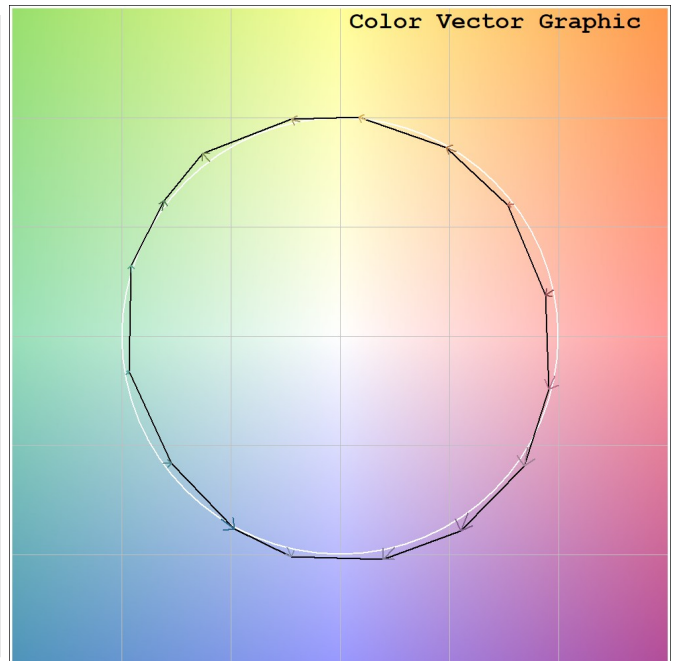
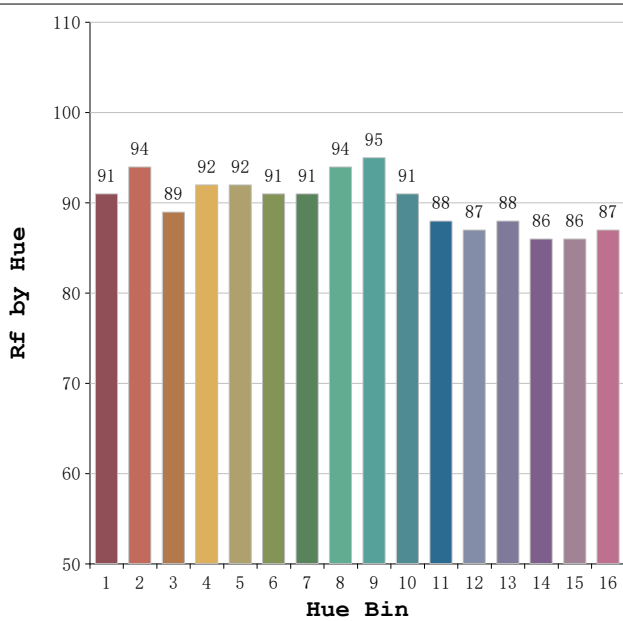
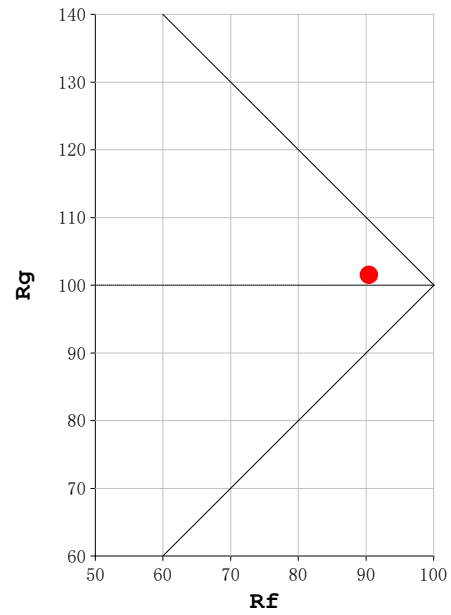
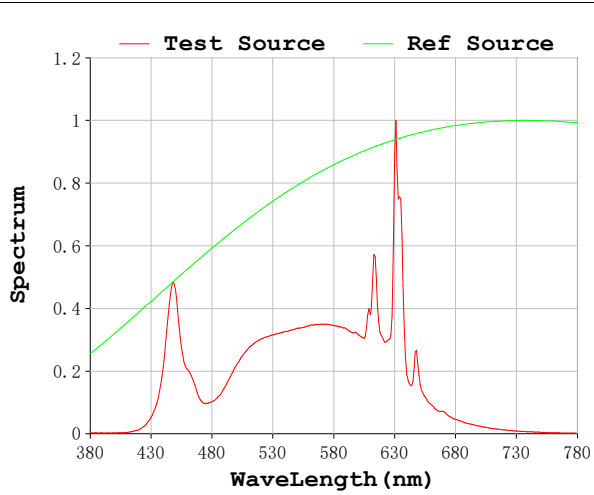
V = 230.07 V I = 0.1375 A P = 30.34 W PF = 0.9589

Status: Integral T = 195 ms Ip = 47417 (72%)

Model:Spotia 30w negro
 Tester:Sergio Carneros
 Temperature:20Deg
 Manufacturer:Luz Negra

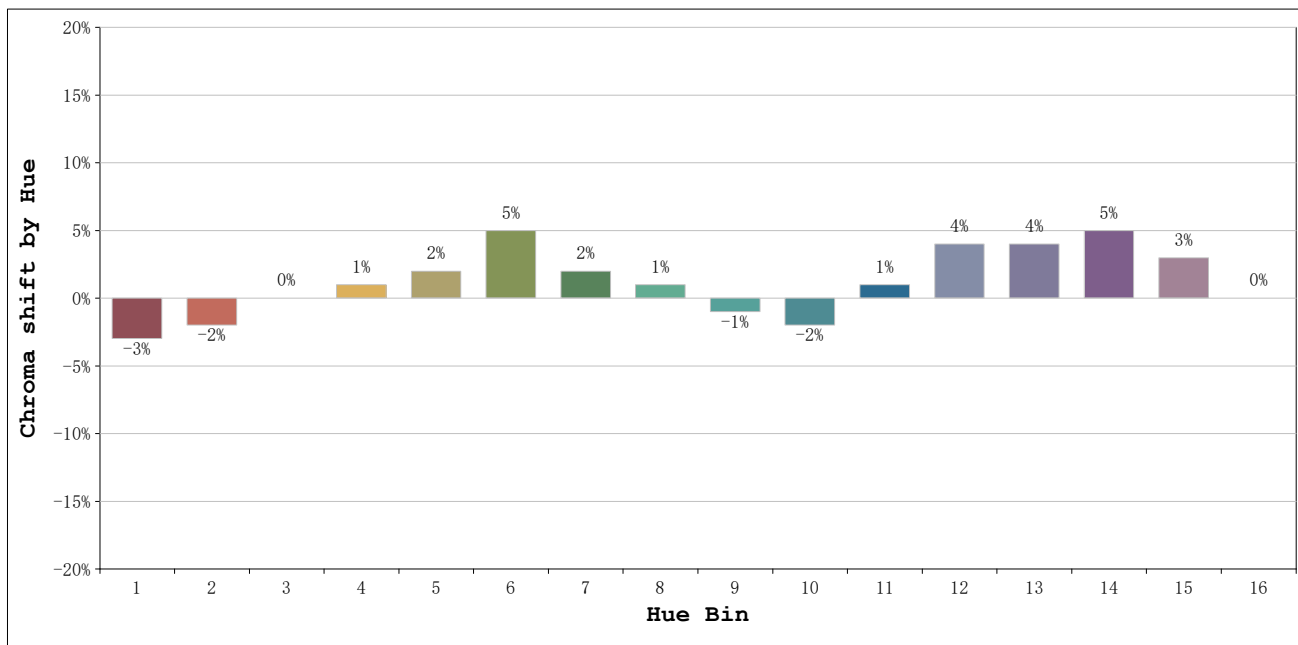
Number:4000k 56°
 Date:2026-03-23 10:00:56
 Humidity:50%
 Remarks:1 unidad

Rf: 90 **CCT: 3928 K** **u': 0.2250**
Rg: 102 **Duv: 0.0026** **v': 0.5062**



Model:Spotia 30w negro
 Tester:Sergio Carneros
 Temperature:20Deg
 Manufacturer:Luz Negra

Number:4000k 56°
 Date:2026-03-23 10:00:56
 Humidity:50%
 Remarks:1 unidad



Hue Bin	Hue Angle	Rf	Graphic shift(%)	
			Chroma	Hue
1	0.0° - 22.5°	91	-3	-1
2	22.5° - 45.0°	94	-2	1
3	45.0° - 67.5°	89	0	5
4	67.5° - 90.0°	92	1	4
5	90.0° - 112.5°	92	2	4
6	112.5° - 135.0°	91	5	1
7	135.0° - 157.5°	91	2	-3
8	157.5° - 180.0°	94	1	-2
9	180.0° - 202.5°	95	-1	0
10	202.5° - 225.0°	91	-2	2
11	225.0° - 247.5°	88	1	8
12	247.5° - 270.0°	87	4	3
13	270.0° - 292.5°	88	4	-5
14	292.5° - 315.0°	86	5	-6
15	315.0° - 337.5°	86	3	-7
16	337.5° - 360.0°	87	0	-6

Model:Spotia 30w negro
 Tester:Sergio Carneros
 Temperature:20Deg
 Manufacturer:Luz Negra

Number:4000k 56°
 Date:2026-03-23 10:00:56
 Humidity:50%
 Remarks:1 unidad